

XC3

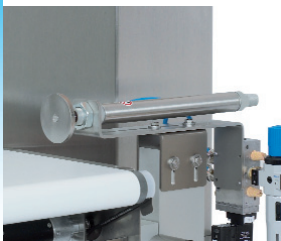
Excellent value, easy to use



8/23/06 04:16		100.0 g		[0] ←	
← S					
PLUS	[109.0 - MAX]				0
GOOD	[91.0 - 109.0]				0
MINUS	[0.0 - 91.0]				0
SPECIAL					0
TOTAL					0
memory locations	article data	counters	belt speed	configuration	
article 4	tare: 0.0 g	0 pcs/min	100.0 g		
Start/Stop Motors: F9					

40 memory locations

Allows for quick and easy product changeovers through an easy to use color touch screen display.



Rugged design

For dependable results in all industries. Even under demanding conditions.

Good value for the money: XC3 features

This checkweigher is designed for basic checkweighing operations. With three weight zones for classifying underweight, good, and overweight products, it has a weighing range up to 3000 grams.

A color touch screen user interface features simple, intuitive operator controls plus convenient display of important production information and history.

Technical data

XC3

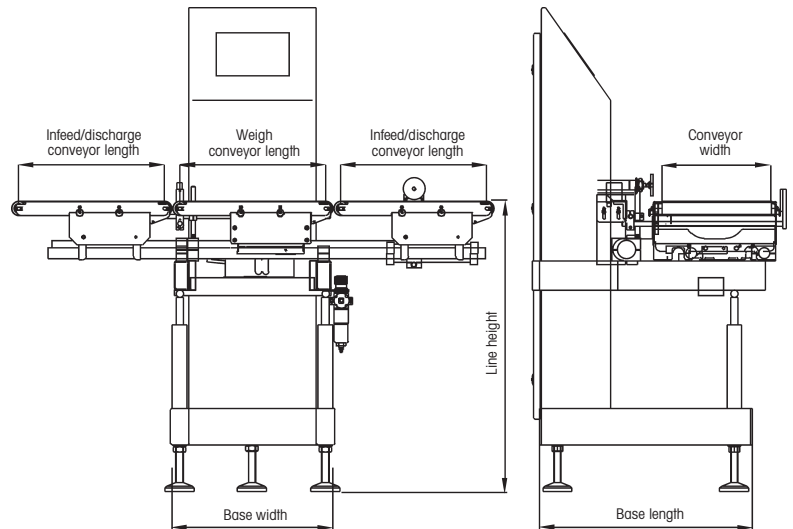
- good value for the money. Rugged and compact design.

Standard features

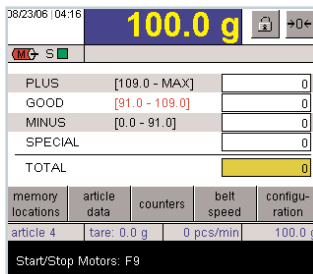
- Color touch screen terminal 5.7" (QVGA), user-controlled contrast
- Operator-friendly menus
- Displays all current weight data, production results, and configuration screens
- 40 product memories
- 3 zone weight classification
- Continuous variable belt speed
- Automatic or manual re-zero
- Strain gauge analog weigh cell
- Air actuated push off rejecter
- IP54 ingress protection

Options and accessories

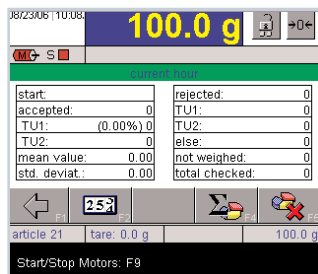
- Statistics program
- Printer – machine mounted
- RS232 or Ethernet interface, for transmission of individual weights, using HI-SPEED transmission protocol (e.g. for connecting to printers or data capture systems)
- 3 zone stack light
- PrintStick portable memory device



XC3 typical schematic



XC3 Main Screen
(shown With Text Functions)



Current Hour Statistics Screen
(Shown With "No Text" Function Icons)

Technical data	XC3															
Weighing range, specific to article weight*	Maximum capacity 3000 g															
Accuracy**	From ± 1 g															
Resolution	0.5 g															
Throughput (weighings/minute)**	Maximum 100															
Line height	750 – 950 mm ± 30 mm															
Base width	440 mm															
Base length	585 mm															
Roller diameter	38 mm															
Standard sorting/rejecting device	Air actuated push off															
Compressed air supply	60 to 115 psi															
Power requirements	100/230 VAC (auto-detect input), 50/60 Hz, single phase, 450 VA															
Conveyor belt (mm)	<table border="1"> <thead> <tr> <th rowspan="2">Width</th> <th colspan="3">Length</th> </tr> <tr> <th>Infeed</th> <th>Weighing</th> <th>Discharge</th> </tr> </thead> <tbody> <tr> <td>200</td> <td>250</td> <td>250</td> <td>250</td> </tr> <tr> <td>300</td> <td>400</td> <td>400</td> <td>400</td> </tr> </tbody> </table>	Width	Length			Infeed	Weighing	Discharge	200	250	250	250	300	400	400	400
Width	Length															
	Infeed	Weighing	Discharge													
200	250	250	250													
300	400	400	400													

Note: Conveyor width and length are fixed and not interchangeable.

* Depends on the design and dimensions of the weighing belt used
 ** Depends on the weight, dimensions, and transport of the product to be weighed



Mettler-Toledo Hi-Speed, Inc.
 5 Barr Road, Ithaca, NY 14850

Toll Free: 800-836-0836
 Tel: 607-257-6000
 Fax: 607-257-6396
 e-mail: hi-speed@mt.com

Subject to technical changes
 ©2007 Mettler-Toledo Hi-Speed, Inc.
 Printed in U.S.A.

6J-01C-0072B

www.mt.com/hi-speed

For more information